

# Quality Criteria for Rental Material

## PERI UP Scaffolding System

PERI Rental Service – Issue 05/2018



# Content

## **Rental service at PERI**

- 4 The PERI rental service

## **Rental criteria**

- 6 Material damage included in the rental price
- 7 Material damage not included in rental price
- 12 Zero Damage - the PERI campaign supporting quality assurance

**Issue 05/2018**

### **Publisher**

**PERI GmbH**  
**Schalung Gerüst Engineering**  
Rudolf-Diesel-Straße 19  
89264 Weißenhorn  
Deutschland  
info@peri.com  
www.peri.com

## **Delivery and return of materials**

- 14 Optimal preparation of return deliveries

### **Important information**

All current safety regulations and guidelines applicable in those countries where our products are used must be observed.

The photos shown in this brochure feature construction sites in progress. For this reason, safety and anchor details in particular cannot always be considered as conclusive or final. These are subject to the risk assessment carried out by the contractor.

In addition, computer graphics are used, which are to be understood as system representations. To ensure a better understanding, these and the detailed illustrations shown have been partially re-

duced to show certain aspects. The safety installations that may not be shown in these detailed descriptions must nevertheless still be available. Please note that the systems or items shown might not be available in every country.

Safety instructions and load specifications are to be strictly observed at all times. Separate structural calculations are required for any deviations from the standard design data.

The information contained herein is subject to technical changes in the interests of progress. Errors and typographical mistakes reserved.

## The PERI Rental Service

**PERI has clearly defined quality criteria regarding the condition of the rental material for deliveries and returns. These quality criteria serve to avoid any complaints and result in cost transparency.**

**This brochure contains information on:**

- the kind of materials that meet the PERI quality criteria and the ones that do not
- how the materials are safely and efficiently loaded, i.e. space-saving, onto the truck
- how the materials are optimally used, treated, cleaned and stored on the construction site
- how the materials can be prepared for on-time return deliveries to PERI
- which type of standard packaging is to be used for the materials

**Compliance with the tips and guidelines provides numerous advantages such as:**

- reduced costs (cleaning, repair, scrap, missing material, freight)
- reduced safety risks
- increased efficiency on the jobsite
- accelerated handling on the jobsite



Type of damage/cleaning	Included in the rental price	Not included in rental price
Wear and damage due to proper use	■	
Mechanical damage to the materials caused by improper use		■
Final cleaning of the materials by PERI after pre-cleaning by the user on the construction site	■	
Cleaning contaminated materials that do not meet the requirements for a final cleaning		■



## Material damage included in the rental price

Repairs / final cleaning by PERI, without charge



### Scaffold Decks UDS / UDI / UDG

- bent on the side of the profile, deck can be positioned easily



### Scaffold Decks UDS / UDI / UDG

- dent on the side of the profile, deck can be easily mounted



### Scaffold Decks UDS / UDI / UDG

- surface rust



### Scaffold Decks UDS / UDI / UDG

- hole in the deck but no damage to the ribs
- UDS  $\leq 10$  mm
- UDI / UDG  $\leq 25$  mm



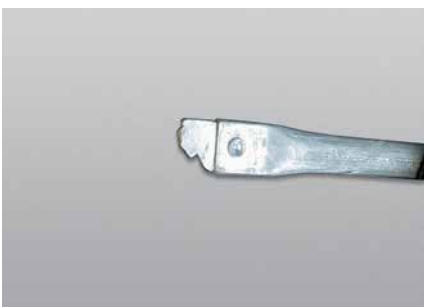
### Standards UVR

- bent, but no dents or buckling
- permitted bending  $\leq L/500$



### Ledger UH

- dented  $< 3$  mm



### Face Brace UBF

- Diagonal head bent  $\leq 5$  mm



### Staircase UAS

- dent in the side profile, without cracks in the material or welding



### Access Deck UAL

- Damage to the wooden panel/hatch due to wear, effects of the weather etc.



# Material damage not included in rental price

Repairs carried out by PERI, costs will be billed



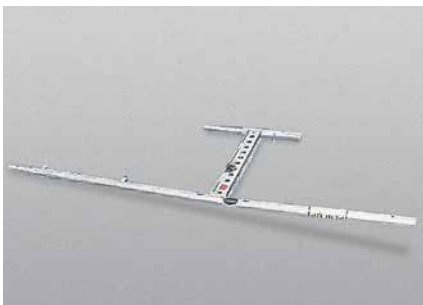
**Scaffold Decks UDS / UDI / UDG**  
 ■ defective rivets



**Scaffold Decks UDS**  
 ■ lug of the lift-off prevention is broken



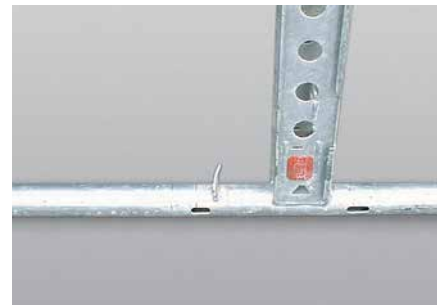
■ Scaffold Decks UDI / UDG  
 ■ claw is bent or cracked



**T-Frame UVT**  
 ■ bent  
 ■ no dents or buckling of the tube profile  
 ■ permitted bending  $UVT \leq L/500$



**T-Frame UVT**  
 ■ bent  
 ■ assembly of decking is possible  
 ■ damaged at one point but no cracks in the welding seam



**T-Frame UVT**  
 ■ stop plate is missing or bent  
 ■ no damage to the welding seam



**Ledger UVH**  
 ■ bent = steel deck cannot be mounted



**Ledger UH**  
 ■ opening is bent



**Ledger Brace UBL**  
 ■ missing gravity pin



# Material damage Repairs carried out by PERI, costs will be billed



**Toeboard Wood UPT**  
■ damaged metal fitting



**Toeboard Steel UPY**  
■ flange of toeboard is bent



**Scaffold Tubes**  
■ bent  
■ no dents or buckling of the tube profile  
■ permitted bending  $\leq L/200$



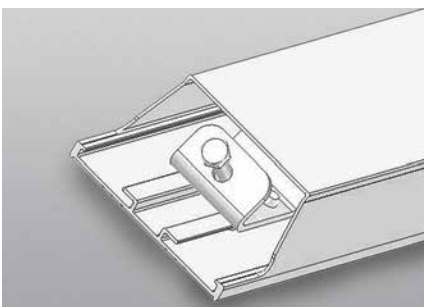
**Access Deck UAL**  
■ defective welding seam on the mounting



**Access Deck UAL**  
■ damaged ladder  
■ hole in deck  
■ snap fastener is damaged



**Crosshead**  
■ bent  
■ bent and with crack on the welding seam  
■ angle is damaged



**Decking Gap Filler UD**  
■ connection plate is bent



**Standards UVR / UVB**  
■ rosette is bent  
■ permitted bending  $\leq 20$  mm



**End Guardrail UPX**  
■ bent fork  $\leq 20$  mm





# Material damage not included in rental price

Disposal (scrapping) by PERI, costs will be billed



**Scaffold Decks UDS**

- surface dent > 10 mm
- Tox connection is damaged, box profile partly open



**Scaffold Decks UDS**

- side profile dented > 10 mm



**Scaffold Decks UDS**

- hole in profile



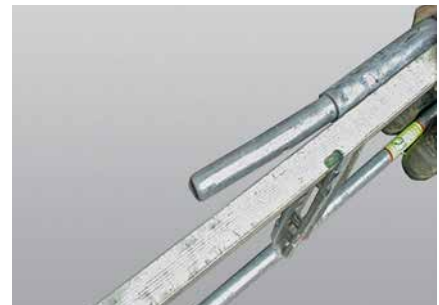
**scaffold decks are bent**

- > 15 mm
- buckling or crack in the profile



**Scaffold Decks UDI / UDG**

- section through the profile



**T-Frame UVT**

- vertical standard connector is bent
- all visible signs of damage and assembly problems



**T-Frame UVT**

- bent
- complete cross-section is affected



**Ledger UH**

- wedge is bent
- crack in the material



**Ledger UH**

- vertically bent profile



# Material damage not included in rental price

Disposal (scrapping) by PERI, costs will be billed



**Ledger UH**

- dent or buckling on the edges of the Ledger



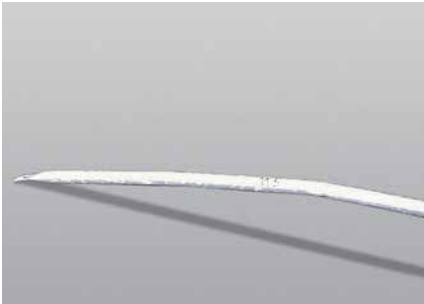
**Ledger UH**

- bent
- dents or buckling on the tube profile
- permitted bending  $\leq L/300$



**Ledger Brace UBL**

- dent in the profile  $\text{Ø} > 3 \text{ cm}$



**Diagonal Bracing**

- bent
- dents or buckling on the tube profile
- permitted bending  $> L/500$



**Node Brace UBK**

- flange edge is damaged



**Scaffold Tube**

- bent
- dents or buckling on the tube profile
- permitted bending  $> L/200$



**Castor UEW**

- broken spindle



**Castor UEW**

- wheel broken due to overloading



**Castor UEW**

- non-functional brake





**Spindles UJB / UJS / TR 38-70/50**  
 ■ wingnut is defective



**Spindles UJB / UJS / TR 38-70/50**  
 ■ head or base plate is broken



**Cross Forkhead**  
 ■ sawn off spindle



**Cross Forkhead**  
 ■ bent head plate > 5 mm



**Cross Forkhead**  
 ■ spindle is bent



**Toeboard Wood UPT**  
 ■ toeboard is broken



**Toeboard Steel UPY**  
 ■ heavy deformation of the toeboard edges



**Stair Tower**  
 ■ deformation / damage at one point of the frame profile on the landing guardrail



**Guardrail UPG**  
 ■ bent  
 ■ visible cracks  
 ■ permissible angle deviation > 45°



## Zero Damage

### The PERI campaign supporting quality assurance

If PERI materials are returned from a construction site in poor condition, they must be cleaned, repaired or even scrapped in the event of a write-off. In the case of any mechanical damage or heavy soiling that has been caused by the user, labour and material costs will be charged separately. PERI has launched the Zero Damage campaign to raise user awareness on the construction site regarding optimal handling of the materials.

#### The aim of the Zero Damage campaign is to:

- provide users with all necessary information with regard to proper handling and use of all PERI materials on the construction site
- help users reduce costs relating to material damage and soiling that could occur after the return delivery to PERI
- optimise communication channels between users and PERI



## Zero Damage Quality Assurance

#### Cleaning of materials on the construction site

- Manual cleaning with the help of a scraper
- Cleaning with a high-pressure cleaner (if available)

#### Throwing materials

- Materials must not be thrown as this could result in damage
- Materials must be handled with care and stored in PERI standard packaging

#### Correct assembly

##### Assembly according to the Instructions for Assembly and Use

- Assembly always takes place in accordance with the Instructions for Assembly and Use
- Extreme caution is required when using a hammer

## Examples taken from the campaign

### Correct and incorrect handling of PERI materials



**Correct**

Use of a scraper or high-pressure cleaner



**Incorrect**

Return of soiled materials to PERI



**Result**

Cleaning costs



**Correct**

Small components must be carefully handled and stored on pallets



**Incorrect**

Throwing or dropping materials



**Result**

Costs for repairs or scrapping



**Correct**

Scaffolding is mounted according to the Instructions for Assembly and Use



**Incorrect**

Mounting clamped components with force



**Result**

Costs for repairs or scrapping



# Optimal preparation of return deliveries

Measures taken on the construction site

## 1. Pre-clean the materials



Pre-cleaning makes it easier to install scaffolding components. In addition, regular cleaning ensures that no additional costs are incurred after the materials have been returned to PERI.

**Important**  
**Only use suitable tools to clean the PERI rental equipment in order to avoid damaging the system components.**

**Our tip**  
**Remove any concrete residue as soon as possible after dismantling.**

## 2. Register return deliveries



By registering a return delivery at the respective PERI branch, if necessary 3 working days before the scheduled date, you will facilitate problem-free returns of rental materials. Freight commissioning takes place separately at the customer's own discretion or if commissioned by PERI directly.

### **The following information is required when registering**

- Consignment collection through PERI or arranged by the freight forwarder
- PERI customer number
- Name of the construction project and PERI order number
- Date of the planned pick-up or planned return delivery to PERI
- Type of materials and quantity

### 3. Pack according to PERI standards



#### Important

If particular attention has to be paid to special freight / construction site requirements when placing the order, please inform us immediately about

- the necessity of a loading crane including details of the loading radius or loading width
- special construction site conditions such as a narrow access or similar

#### Our tip

Accurate data – especially regarding material quantities – makes it easier to calculate freight volumes. This optimises all return delivery processes.



The materials are bundled together to form loadable units, sorted and made ready for loading and transportation.

#### Important

If PERI is commissioned to collect the rental materials, the loading volume is calculated in accordance with our packaging guidelines. If the requested loading volume is exceeded through the use of non-compliant packaging, processes can be made more difficult and additional costs could be incurred.

#### Our tip

The PERI packaging guidelines contain detailed information on the packaging units of all PERI systems. These guidelines guarantee an optimised loading volume and correspondingly optimised transport costs.

## Optimal preparation of return deliveries

### Measures taken on the construction site

#### 4. Load truck and secure the load



Correct vehicle loading enhances overall safety, as well as ensuring smooth material return processes.

##### **Guidelines for vehicle loading**

- Only reliable lashing equipment should be used.
- Wire crates require a cover or foil protection. This will prevent loose small components from being lost.
- The weight of one packing unit may not exceed 2 t. Position timbers at least 8 cm high under all packaging units that are not packed in ring pallets or boxes. This is necessary as our employees unload the materials with forklift trucks.
- For some rental equipment, edge protectors should be used to prevent any edge damage. Detailed information can be found in the PERI packaging guideline (see "Comments" for the equipment concerned).

##### **If you commission PERI to carry out the transport, the following also applies**

- The materials are to be packed in units ready to be collected.
- The units specified for each transport of PERI rental materials must be in accordance with the "PERI Packaging Guidelines" brochure.
- Loading time must not exceed 2 hours.

##### **Important**

When loading, both the shipper and the driver are responsible for ensuring correct load securing. Compliance with the applicable regulations is absolutely essential.



## 5. Materials unloaded in the PERI rental park



After the forwarder / driver has registered on arrival at the PERI rental park, PERI employees begin unloading operations using a dedicated unloading lane. A PERI employee unloads the materials with a forklift truck and places these in an incoming goods area.

Unloaded materials are then marked with:

- a booking reference number (internal number for a return delivery)
- PERI customer number
- the order number of the construction project
- the date of arrival in the PERI rental park

**The optimal System  
for every Project and  
every Requirement**



**Wall Formwork**



**Column Formwork**



**Slab Formwork**



**Climbing Systems**



**Bridge Formwork**



**Tunnel Formwork**



**Shoring Systems**



**Construction Scaffold**



**Facade Scaffold**



**Industrial Scaffold**



**Access**



**Protection Scaffold**



**Safety Systems**



**System-Independent  
Accessories**



**Services**



**PERI GmbH**  
**Formwork Scaffolding Engineering**  
 Rudolf-Diesel-Strasse 19  
 89264 Weissenhorn  
 Germany  
 Tel. +49 (0)7309.950-0  
 Fax +49 (0)7309.951-0  
 info@peri.com  
 www.peri.com

