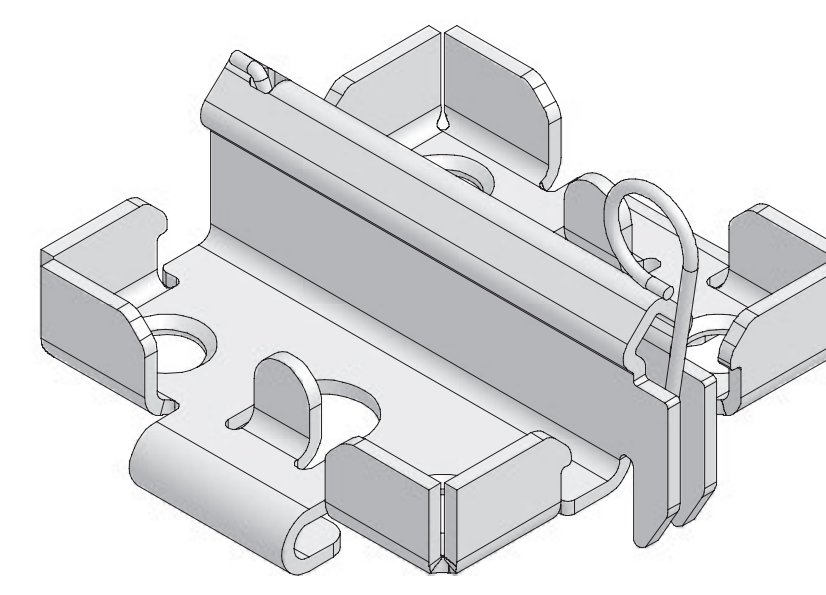


Tips for ensuring smooth construction progress

- Before assembly, secure the working area with safety-relevant equipment.
- If possible, start the assembly in a rectangular corner with walls in both directions.
- Preset the required prop length = height under the slab - approx. 20 cm.
- Use Shuttering Aid GFA for shuttering and striking the elements.
- Align the props along the wall so that the handles can be used without difficulty.
- In order to mount the Wall Holder GFW, at first a tie rod with counter nut has to be inserted through the tie hole from the rear of the wall. Then the Wall Holder GFW can be mounted.
- For providing a better understanding, detailed illustrations which have possibly not been featured in these detailed drawings must nevertheless be available.

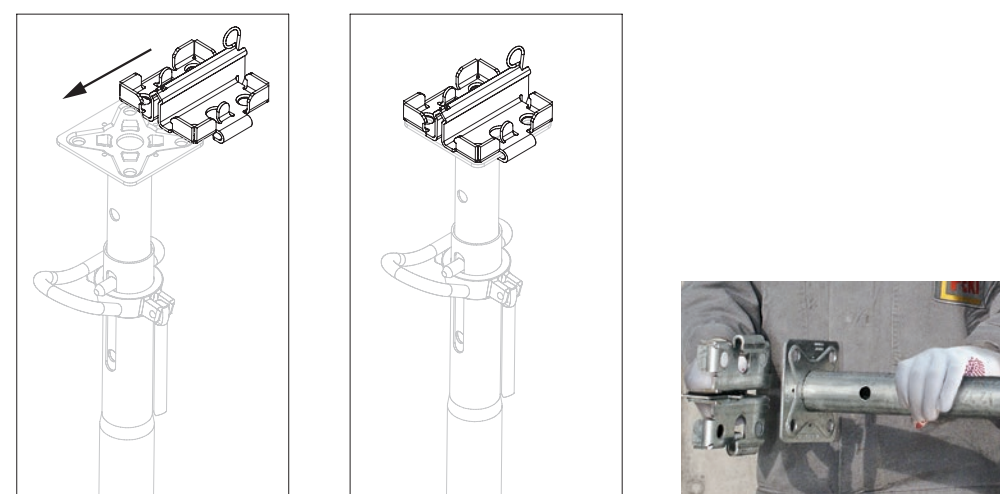
• This poster presents only part of the intended use of the GRIDFLEX system. More information is available in the assembly instructions.



GRIDFLEX

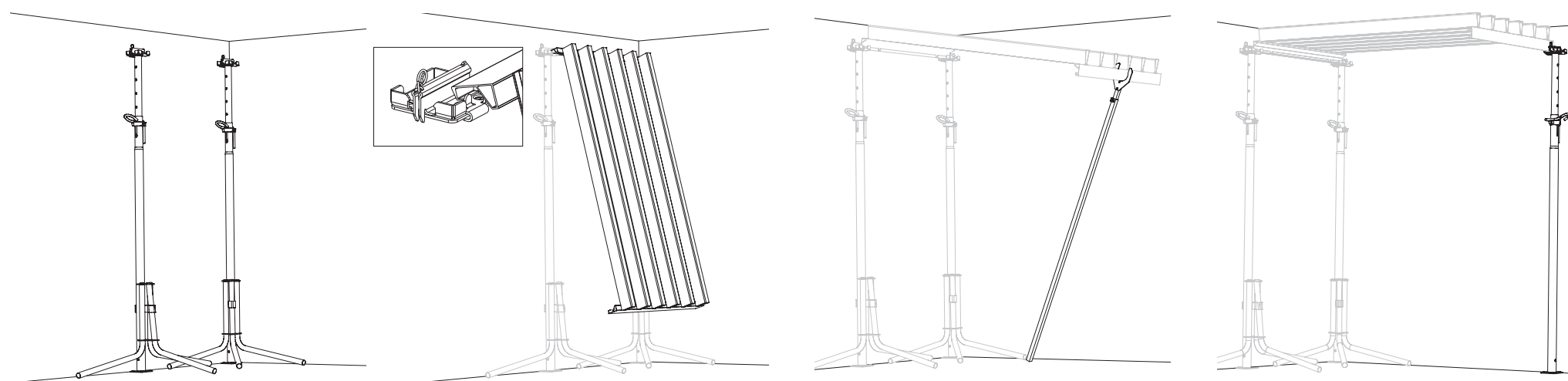
Fast, efficient and safe

Assembly of the prophead



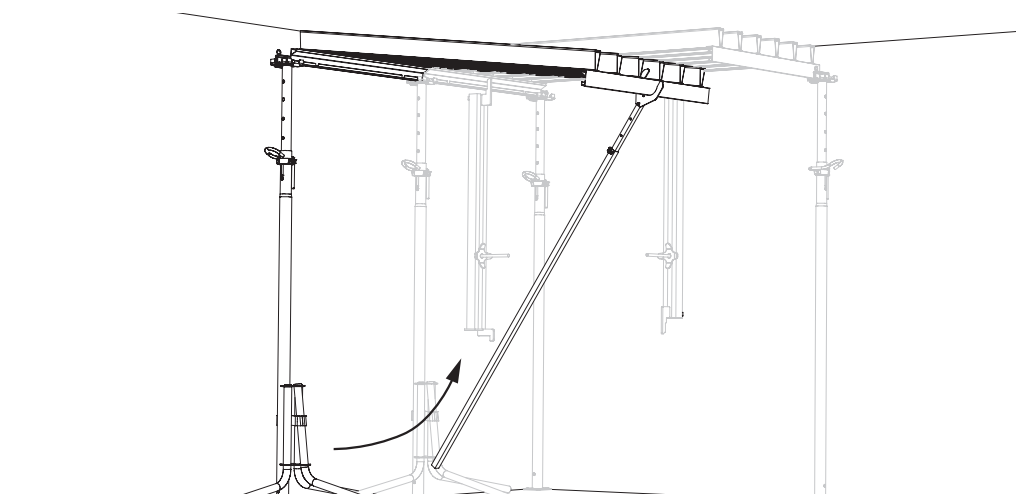
Slide the Prophead GFH onto the end plate of the prop until it clicks into place.

Assembling the first element

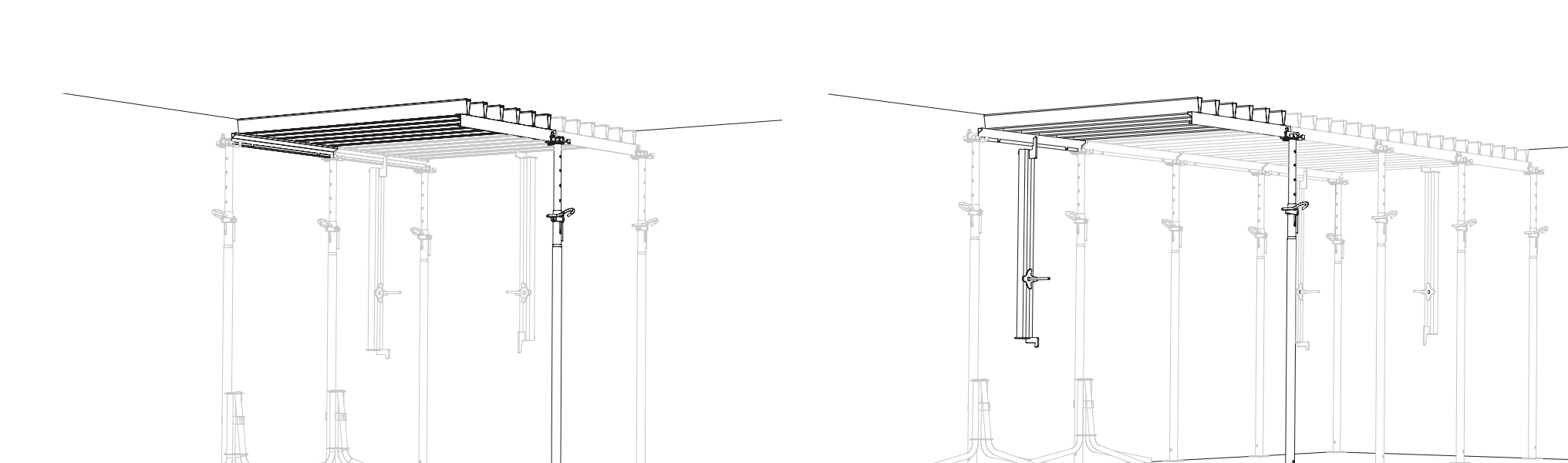


- 1 Set up two props with propheads in a corner and secure with the help of tripods (spacing: 1.00 m)
- 2 Hook in Panel GFP (white) at one end.
- 3 Swivel up the element by means of the Shuttering Aid GFA and then support the free end with the shuttering aid.
- 4 Attach a third prop together with prophead in a diagonal position to the end of the element, and then bring it into a vertical position, spacing 2.0 m. Shuttering Aid GFA is subsequently removed.

Assembling the first row



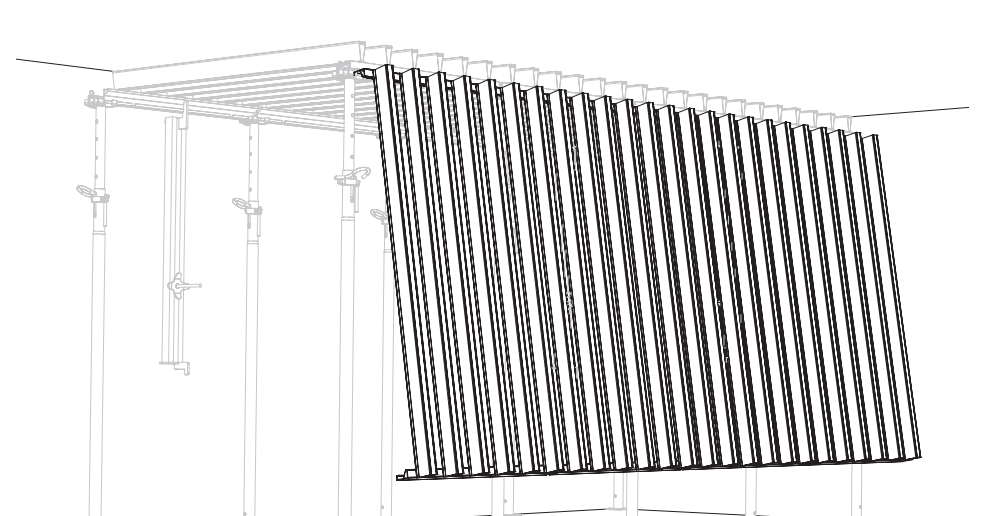
- First row - always install elements across the complete width before starting with the next row.**
- 1 Position the prop together with the prophead.
 - 2 Mount Standard Element GFP.
 - 3 Swivel up the element by means of the Shuttering Aid GFA and then support the free end with the shuttering aid.
 - 4 Screw in prop with prophead into the end pieces of both Standard Panels GFP and bring into a vertical position. The tripods can be re-used.



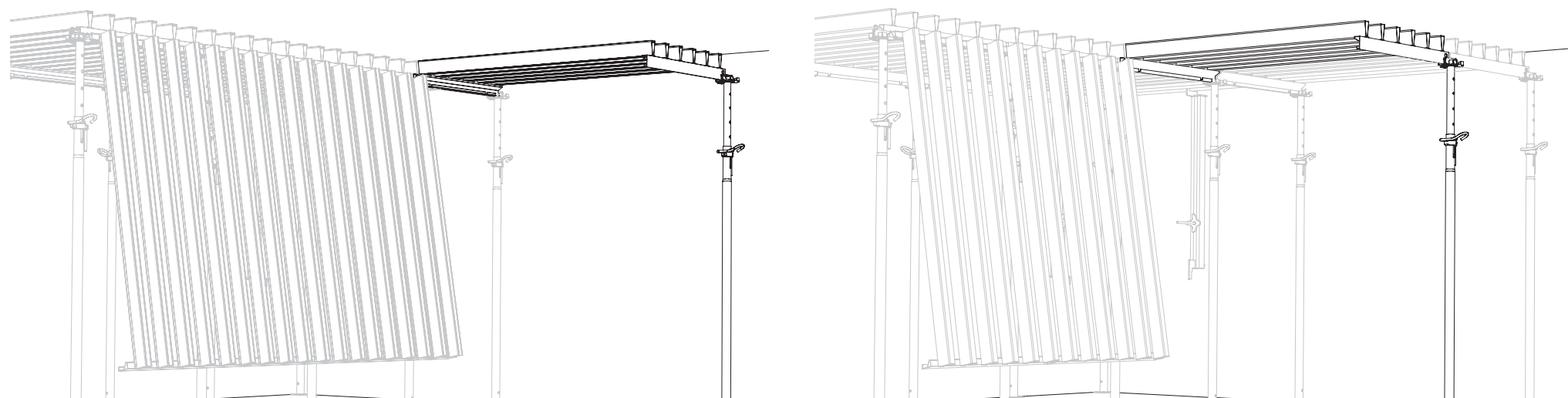
- 5 Attach horizontal mounting. Install Wall Holder GFW laterally in at least every third bay.

The drawings shown refer to slabs with a thickness of ≤ 33 cm (with L/300).

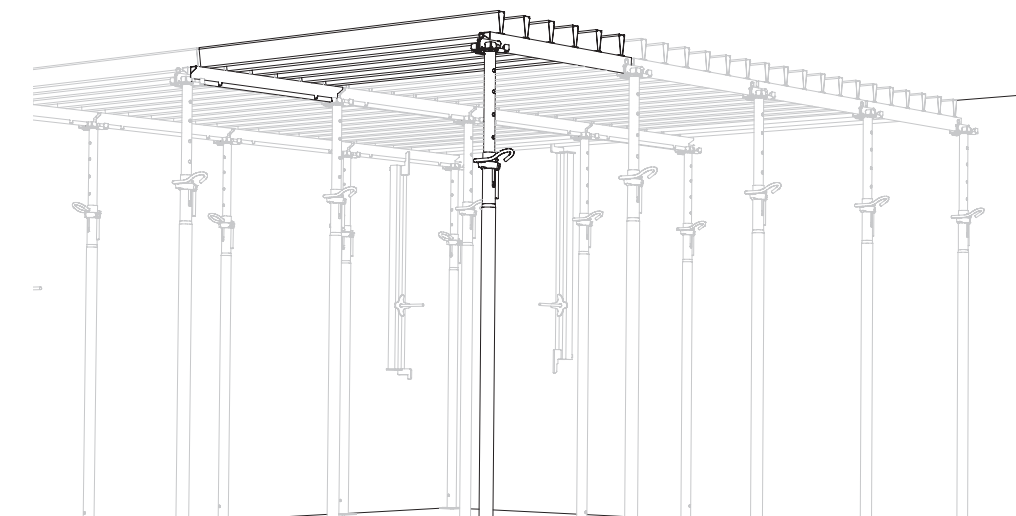
Assembly of the following rows



- Second row**
- 1 Hook in Standard Panel GFP.
 - 2 Swivel up the first Standard Panel GFP by means of the Shuttering Aid GFA and then support the free end with the shuttering aid.

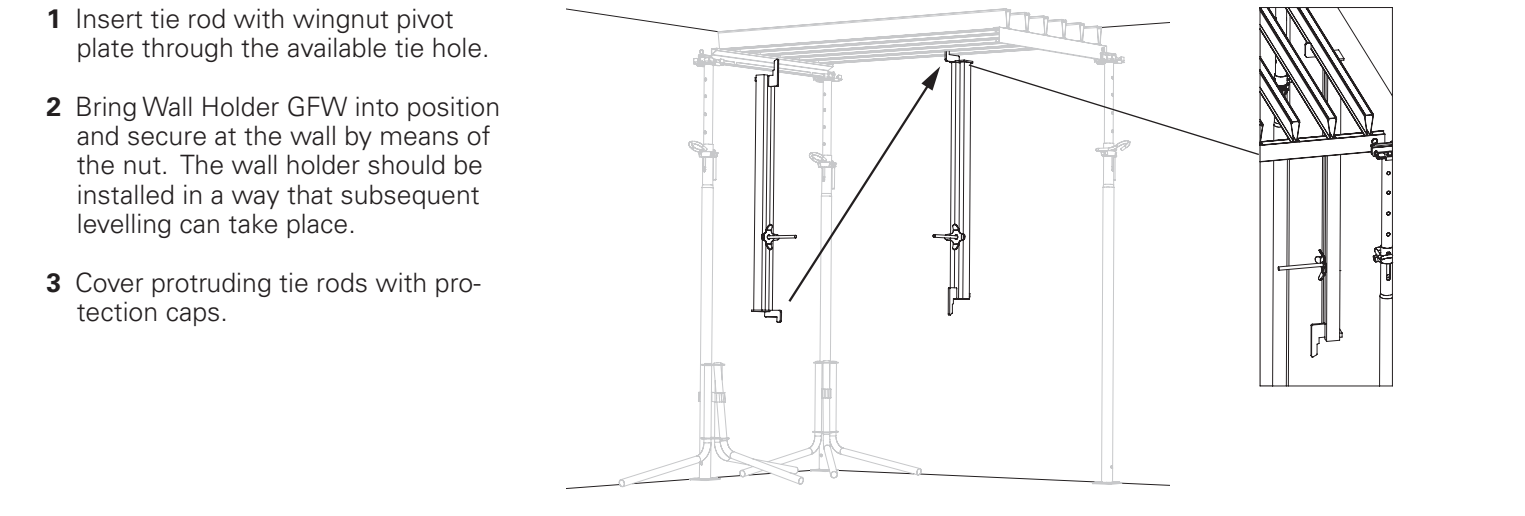


- 3 Attach prop together with prophead in a diagonal position to the end of the element, and then bring into a vertical position. After this, remove the Shuttering Aid GFA.
- 4 Swivel up the second Standard Panel GFP and then support the free end with the shuttering aid.



- 5 Screw in prop with prophead into the end pieces of both Standard Panels GFP and bring into a vertical position. Proceed in the same way with the remaining Standard Panels GFP.
- Mount Wall Holder GFW longitudinally in at least every second row.**

A Horizontal anchoring with wall holders



The system must be horizontally anchored. The first element must be held horizontally in both directions. The area to be formed may not be accessed before the formwork has been horizontally anchored. Persons are not to remain under non-anchored slab formwork.

Striking



Follow instructions

- 1 Filler Panels Cross GFC (red)
- 2 Standard Panels GFP (white)
- 3 Filler Panels Longitudinal GFL (yellow)
- 4 Remove formlining sheets one after the other, then clean and store.

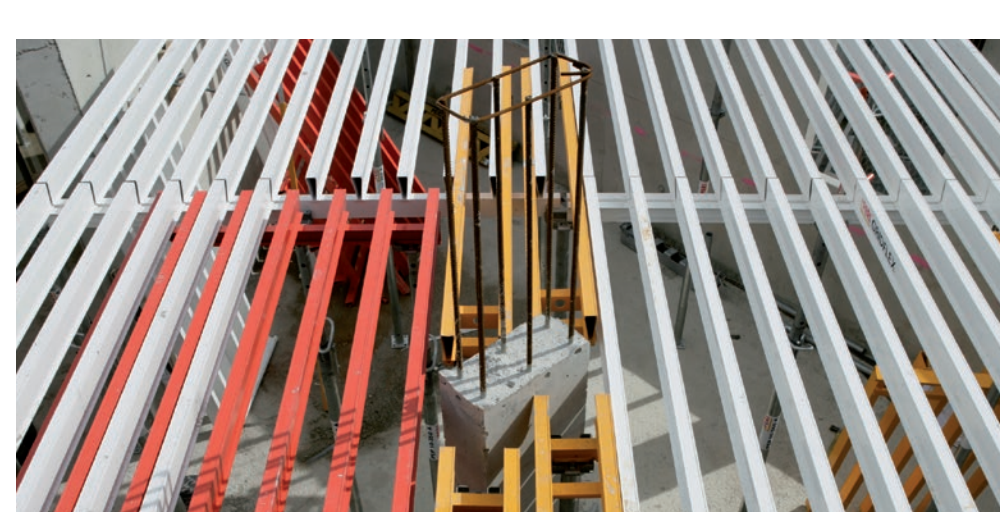
Changing direction



The direction of the standard panel can be changed

- 1 Install prop with prophead with a spacing of 1.00 m and secure with tripod.
- 2 Hook in the element vertically, swivel up using the Shuttering Aid GFA and then support the free end with the shuttering aid.
- 3 After this replace shuttering aid by installing prop with prop head.
- 4 Secure element against lifting.

Shuttering of columns



The filler panels facilitate easy and simple shuttering of columns.

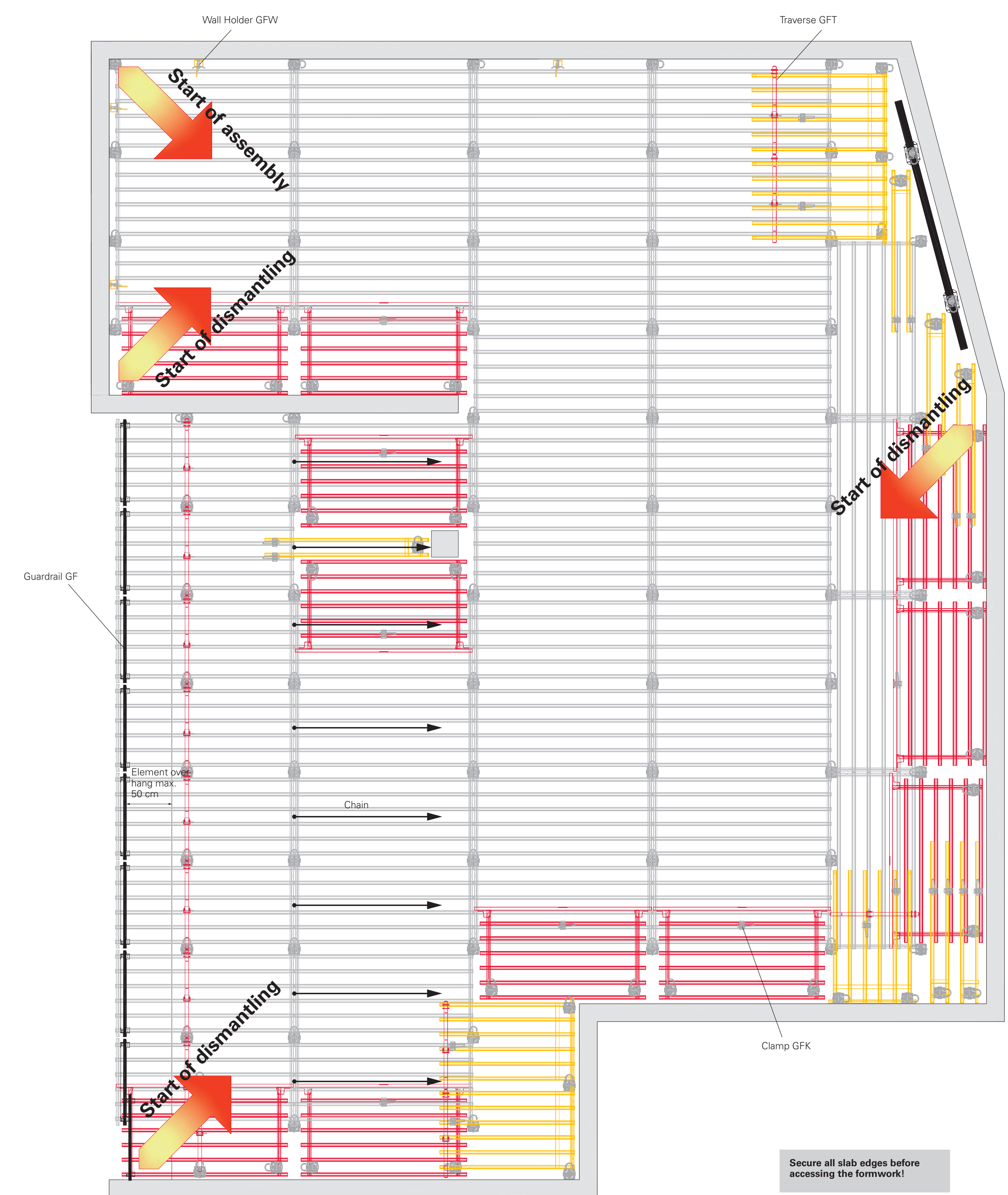
- 1 Measure distance of the props to the slab edge and mount Traverse GFT accordingly.
- 2 Position guardrail on the element.
- 3 With the Filler Panel Longitudinal GFL on the open side.
- 4 Push in tube and secure guardrail by turning the tube at the handle. Nail guardrail to the element.
- 5 Measure distance of the props to the slab edge and mount Traverse GFT accordingly.
- 5 Brace the cantilevers with chains.
- 6 Horizontal mounting with chain.

Installing the formlining

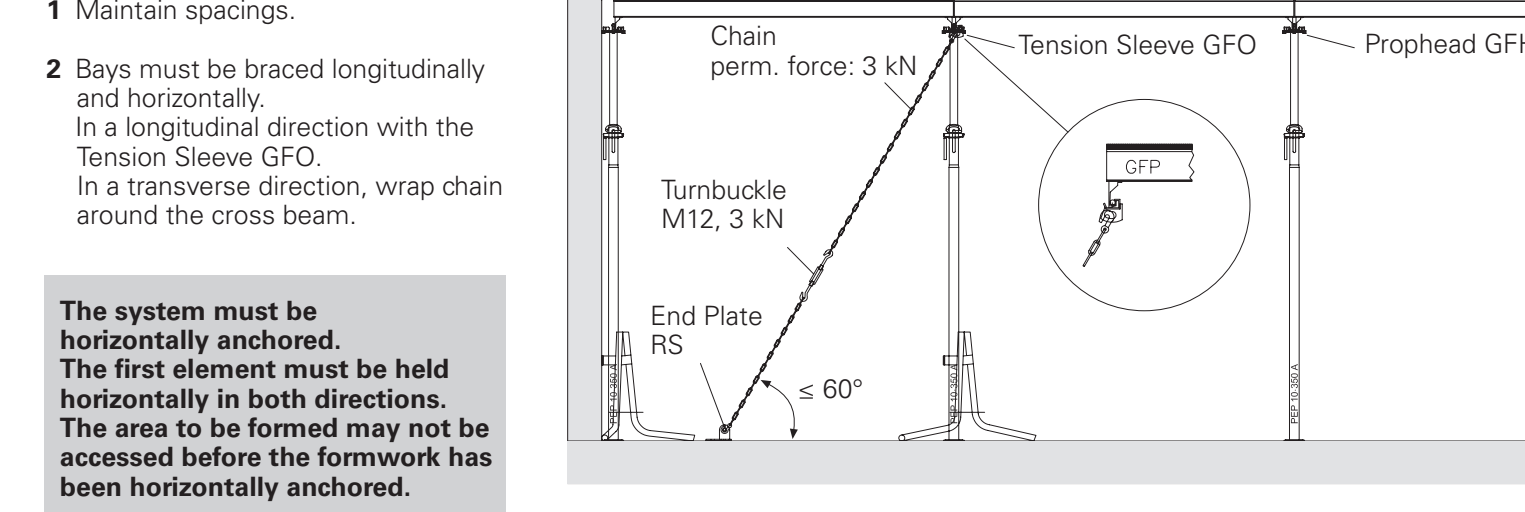


Install the formlining sheets after mounting all elements along with the safety equipment and carrying out levelling.

- Lay sheets at right angles to the elements (in order to facilitate striking).
- With increased requirements, fix the formlining in the corners with nails.
- PERI recommends fixing the formlining sheets with twisted nails, size 2.0/2.2 x 33.

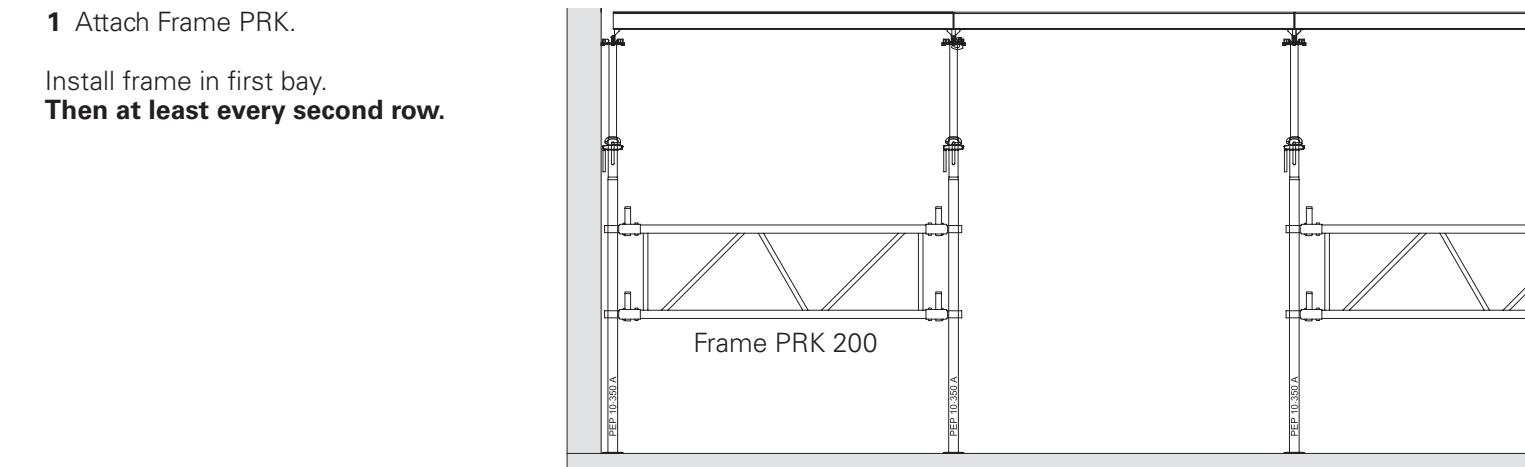


B Horizontal mounting with chain

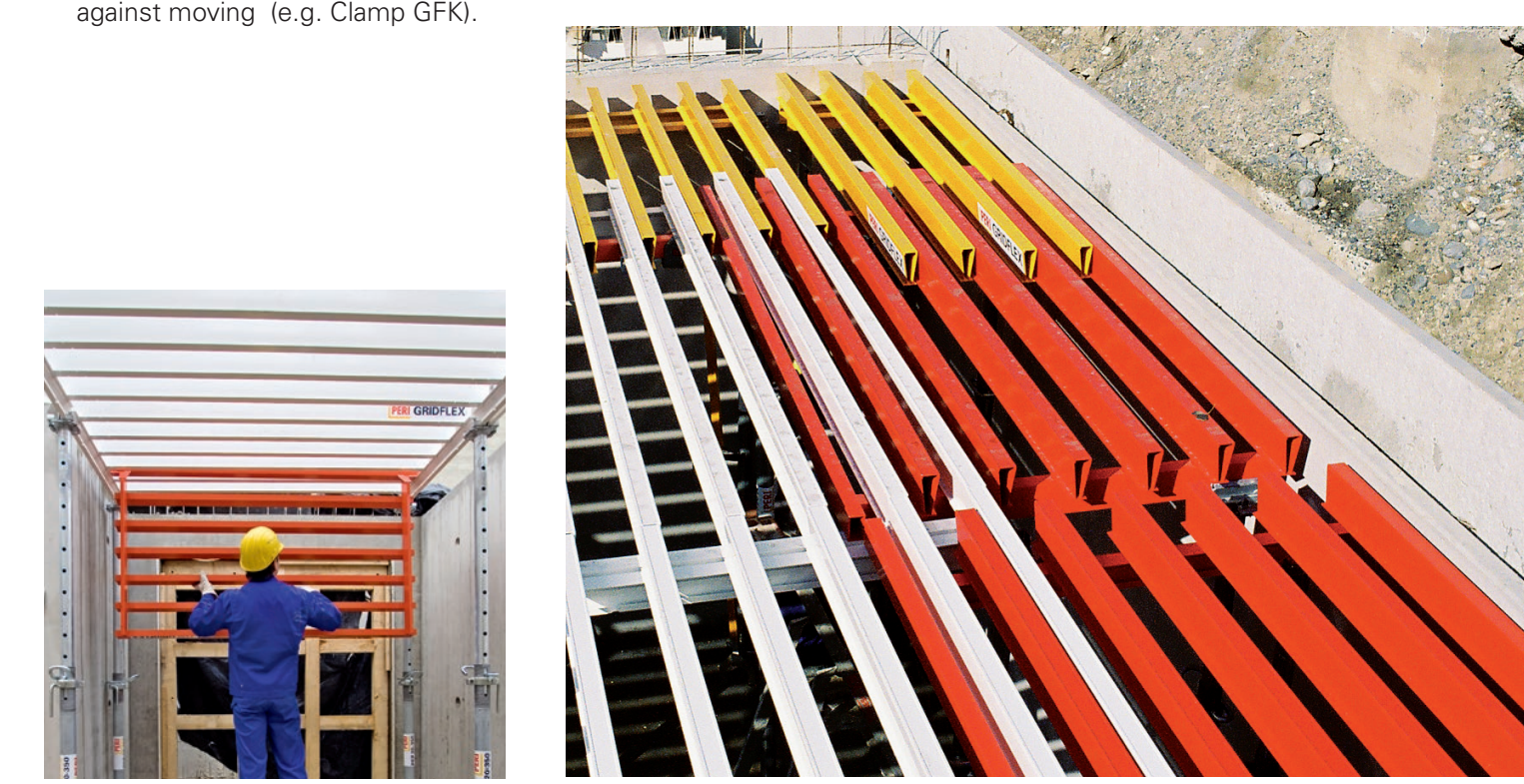
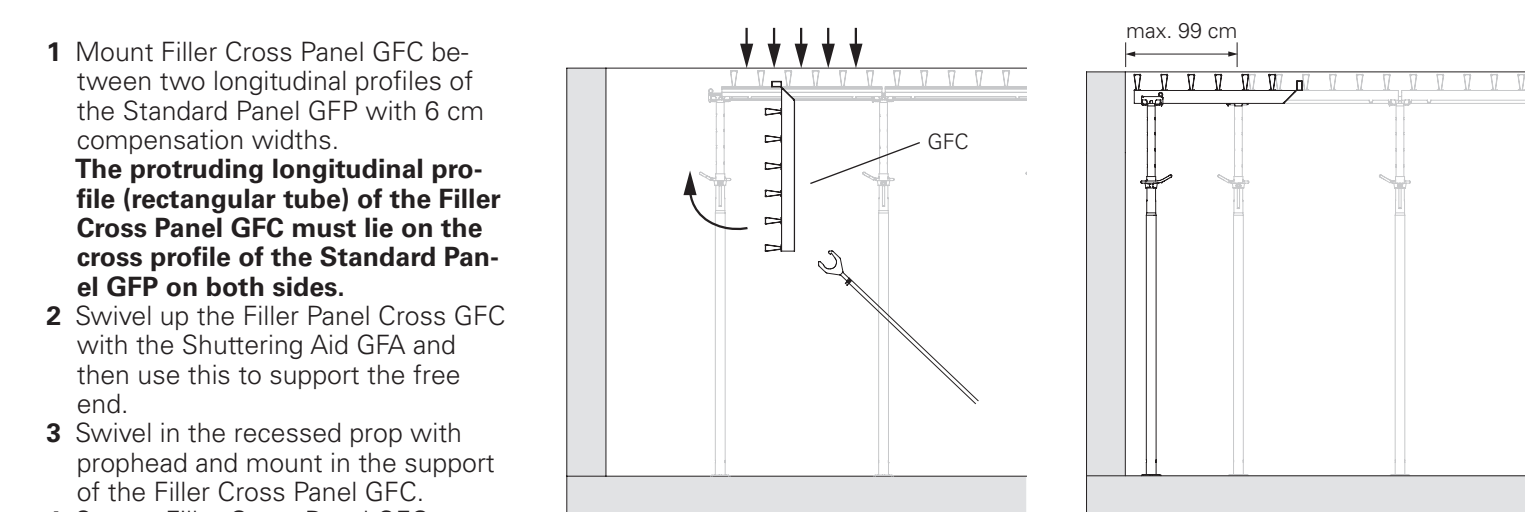


The system must be horizontally anchored. The first element must be held horizontally in both directions. The area to be formed may not be accessed before the formwork has been horizontally anchored.

C Assembly help with Frame PRK



Lateral compensation



Safety at the slab edge

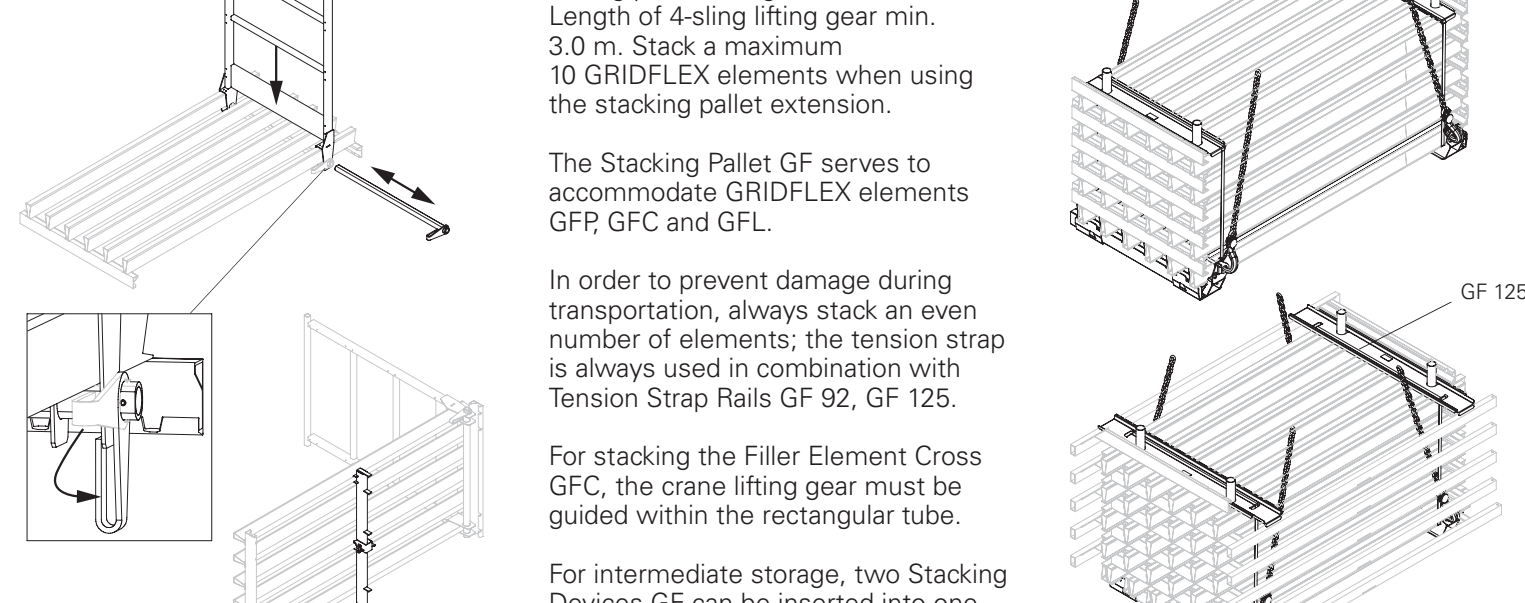
- Preparing the guardrails**
- 1 Pull out the tube on the guardrail.
 - 2 Position guardrail on the element.
 - 3 With the Filler Panel Longitudinal GFL on the open side.
 - 4 Push in tube and secure guardrail by turning the tube at the handle. Nail guardrail to the element.



Assembling the guardrails

- 1 Install base plate with appropriate fixing materials. The permissible chain tensile force is 3 kN.
- 2 Attach rope to the inner cross-profile of the element in the centre for securing the element.
- 3 Mount element on the propheads.
- 4 Pass the rope through the outer cross-profile of the last Standard Panel GFP and secure the unit.
- 5 Centrally mount the Tension Sleeve GFC on the inner cross-profile of the element.
- 6 Attach anchor chain and secure with turnbuckle.
- 7 Swivel up the guardrail unit on the Traverse GFT by means of the Shuttering Aid GFA and then support the free end with the shuttering aid.
- 8 Support traverse with props without propheads.
- 9 Remove rope.

Storage and transportation



Stacking Pallet GF
Permissible load-bearing capacity 175 kg per stacking device GF. Length of sliding lifting gear min. 3.0 m. Stack a maximum 10 GRIDFLEX elements when using for stacking pallet extension.

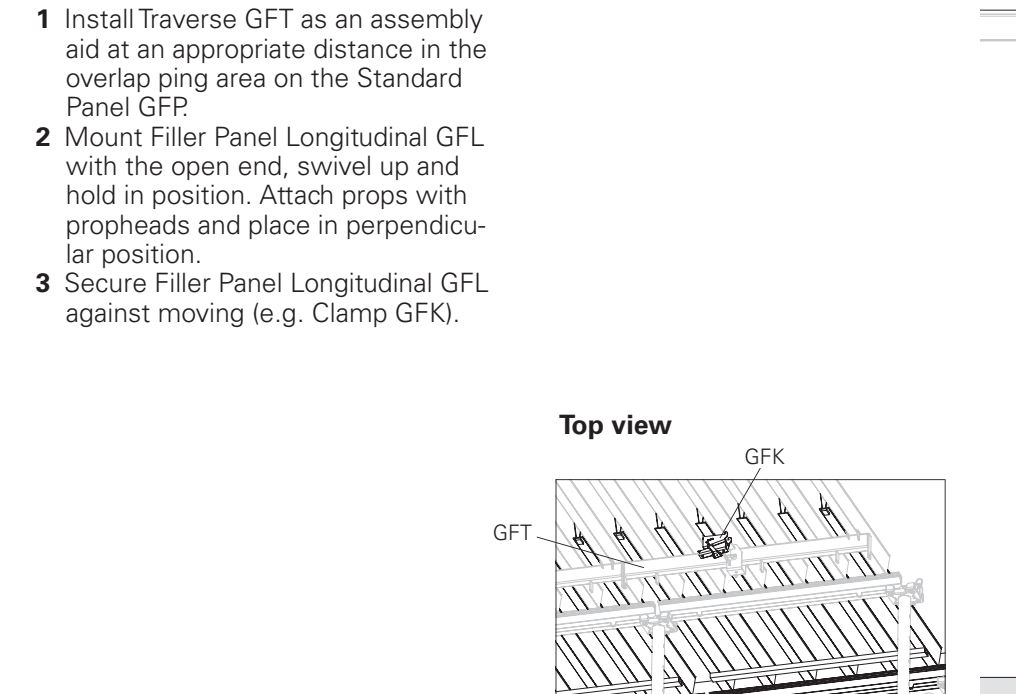
The Stacking Pallet GF serves to accommodate GRIDFLEX elements GFC and GFL.

In order to prevent damage during transportation, always stack an even number of elements, the tension strap is always used in combination with Tension Strap-Rails GF 92, GF 125.

For stacking the Filler Element Cross GFC, the crane lifting gear must be guided within the rectangular tube.

For intermediate storage, two Stacking Devices GF can be inserted into one another.

Length compensation



- 1 Install Traverse GFT as an assembly aid at an appropriate distance in the overlap ring area on the Standard Panel GFP.
- 2 Mount Filler Panel Longitudinal GFL with the open end, swivel up and hold in position. Attach props with propheads and place in perpendicular position.
- 3 Secure Filler Panel Longitudinal GFL against moving (e.g. Clamp GFK).

GRIDFLEX Slab Formwork

Poster



The optimal System for every Project and every Requirement



Wall Formwork



Column Formwork



Slab Formwork



Climbing Systems



Tunnel Formwork



Bridge Formwork



Shoring Systems



Construction Scaffolding



Facade Scaffolding



Industrial Scaffolding



Access



Protection Scaffolding



System-Independent Accessories



Services



PERI GmbH
Formwork Scaffolding Engineering
 P.O. Box 1264
 89259 Weissenhorn
 Germany
 Tel. +49 (0)7309.950-0
 Fax +49 (0)7309.951-0
 info@peri.com
 www.peri.com