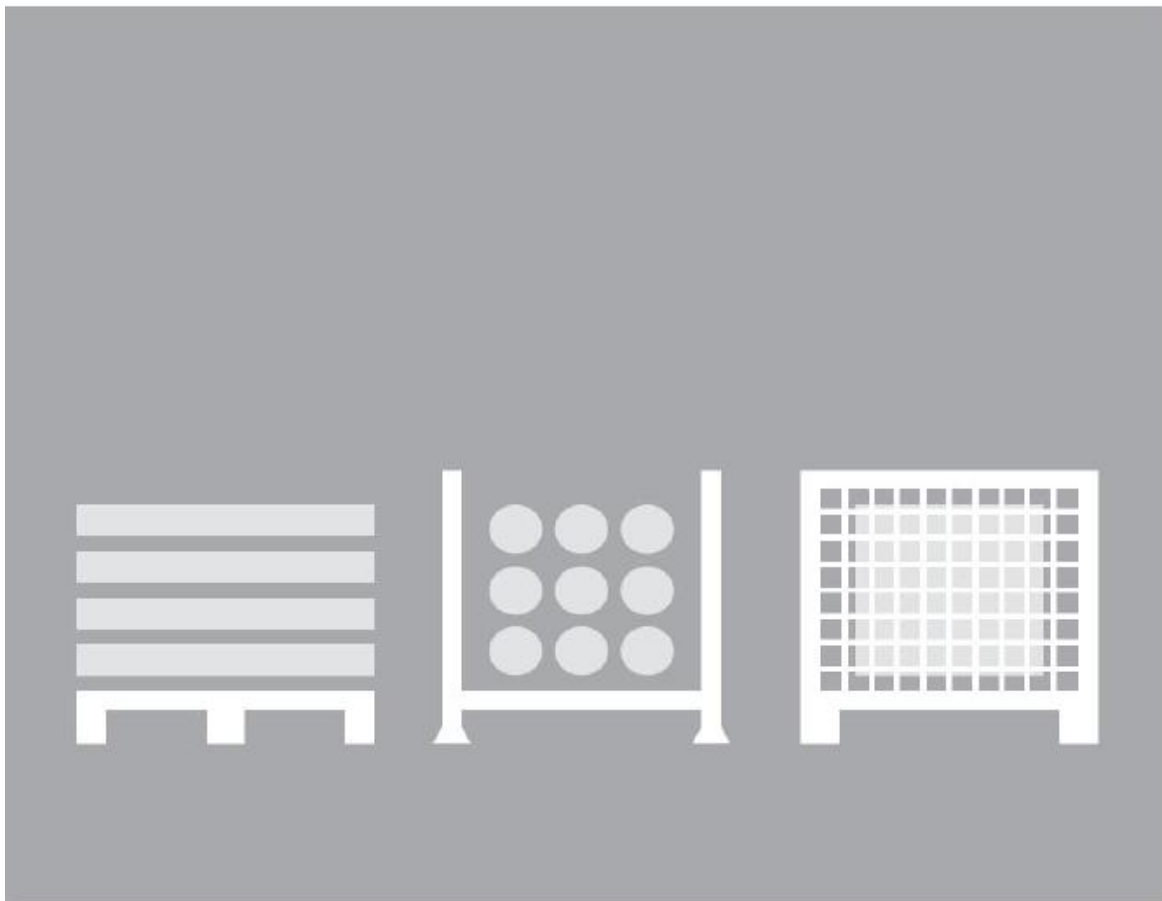


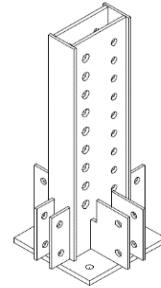
Packaging Guideline for Rental Hong Kong Product

Logistics Excellence / Hong Kong



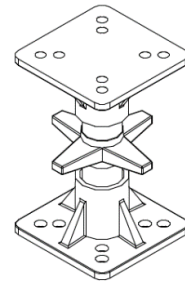
Article №	Article Name	Article Image
200000	VST Base / Head Connector	

amount 6
 packaging unit bundle
 dimensions 3 wide, 2 up
 comments Steel strap, wooden cover plate



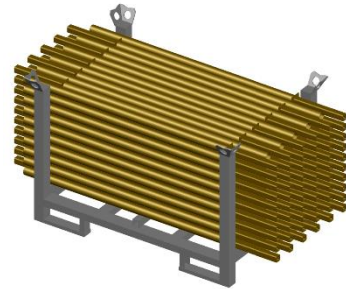
200001 (200415)	Screw Jack 100T	
------------------------	------------------------	--

amount 6
 packaging unit bundle
 dimensions 3 wide, 2 up
 comments Steel strap, wooden cover plate



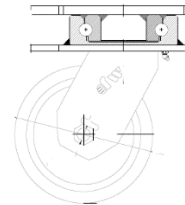
200010	Guardrail Post	
---------------	-----------------------	--

amount 110
 packaging unit post pallet
 dimensions 16 wide, 8 up
 comments Steel strap



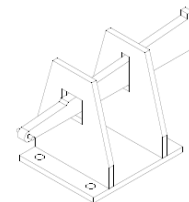
200018	Casters (88D42980S28)	
---------------	------------------------------	--

amount 18
 packaging unit wire crate k
 dimensions 6 wide, 3 up
 comments Steel strap, wooden cover plate



200072	Wheel Adapter	
---------------	----------------------	--

amount 50
 packaging unit wire crate k
 dimensions loose
 comments Steel strap



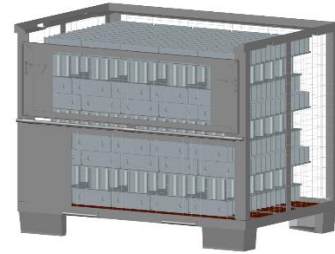
Article №	Article Name	Article Image
200099	Megashor Rocking Head	

amount 18
packaging unit wire crate k
dimensions 6 wide, 3 up
comments Steel strap, wooden cover plate



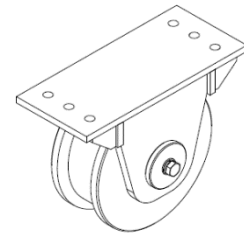
200195 (200404)	RCS Tube Adapter	
------------------------	-------------------------	--

amount 240
packaging unit wire crate k
dimensions 40 wide, 6 up
comments Steel strap, wooden cover plate



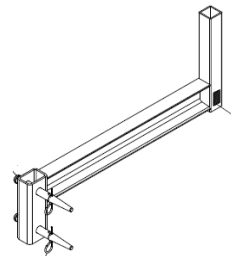
200213	Heavy Duty Wheel 40T	
---------------	-----------------------------	--

amount 6
packaging unit bundle
dimensions 3 wide, 2 up
comments Steel strap, wooden cover plate



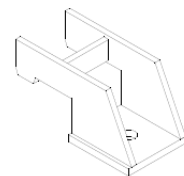
200251	Platform Beam SRU	
---------------	--------------------------	--

amount 70
packaging unit wire crate k
dimensions stacked
comments Steel strap, wooden cover plate



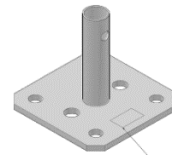
200254	Trio Uplift Bracket	
---------------	----------------------------	--

amount 70
packaging unit wire crate k
dimensions loose
comments Steel strap, wooden cover plate



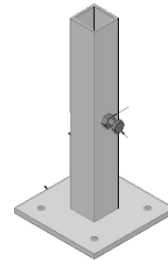
Article №	Article Name	Article Image
200277	Base Plate UJP-2	

amount 300
 packaging unit wire crate k
 dimensions loose
 comments Steel strap, wooden cover plate



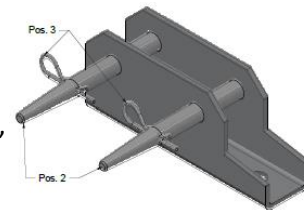
200420	Guardrail Post Holder	
---------------	------------------------------	--

amount 150
 packaging unit wire crate k
 dimensions loose
 comments Steel strap, wooden cover plate



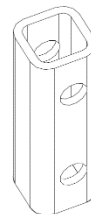
200413	Base Plate Uni	
---------------	-----------------------	--

amount 200
 packaging unit wire crate k
 dimensions 6 layers, 33 per layer + 2
 comments Steel strap, wooden plate between each layer, wooden cover plate



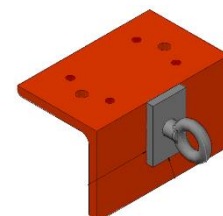
200662	HORIZONTAL CONNECTOR VST 37,5-2	
---------------	--	--

amount 150
 packaging unit wire crate k
 dimensions loose
 comments Steel strap, wooden cover plate



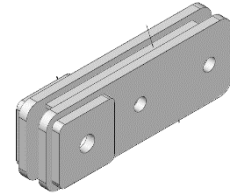
200421	TIMBER FIXATION RCS-SRU HK	
---------------	-----------------------------------	--

amount 200
 packaging unit wire crate k
 dimensions 5 layers, 6x6 per layer + 20
 comments Steel strap, wooden cover plate



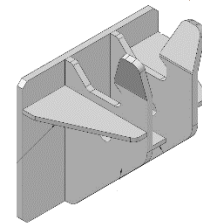
Article №	Article Name	Article Image
200422	CORNER CONNECTOR RCS-SRU 90HK	

amount 130
 packaging unit wire crate k
 dimensions 18 wide, 7 up + 4
 comments Steel strap, wooden cover plate



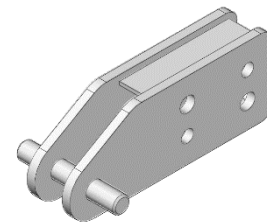
200424	MOUNTING SHOE-2 M24	
---------------	----------------------------	--

amount 18
 packaging unit wire crate k
 dimensions 6 wide, 3 up
 comments Steel strap, wooden cover plate



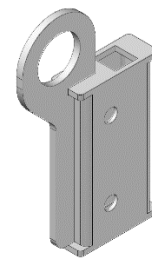
200425	MOUNTING BRACKET RCS-2	
---------------	-------------------------------	--

amount 64
 packaging unit wire crate k
 dimensions 16 wide, 4 up
 comments Steel strap, wooden cover plate



200426	GUARDRAIL POST BRACKET RCS-2	
---------------	-------------------------------------	--

amount 120
 packaging unit wire crate k
 dimensions 12 wide, 10 up
 comments Steel strap, wooden cover plate



200111	BRACING SHOE RCS DW15	
---------------	------------------------------	--

amount 120
 packaging unit wire crate k
 dimensions loose
 comments Steel strap, wooden cover plate

